

GPR157 Antibody (Center)
Affinity Purified Rabbit Polyclonal Antibody (Pab)
Catalog # AP17753c

Specification

GPR157 Antibody (Center) - Product Information

Application	WB,E
Primary Accession	Q5UAW9
Other Accession	NP_079256.4
Reactivity	Human, Mouse
Host	Rabbit
Clonality	Polyclonal
Isotype	Rabbit IgG
Calculated MW	36623
Antigen Region	178-207

GPR157 Antibody (Center) - Additional Information

Gene ID 80045

Other Names

Probable G-protein coupled receptor 157, GPR157

Target/Specificity

This GPR157 antibody is generated from rabbits immunized with a KLH conjugated synthetic peptide between 178-207 amino acids from the Central region of human GPR157.

Dilution

WB~~1:1000

E~~Use at an assay dependent concentration.

Format

Purified polyclonal antibody supplied in PBS with 0.09% (W/V) sodium azide. This antibody is purified through a protein A column, followed by peptide affinity purification.

Storage

Maintain refrigerated at 2-8°C for up to 2 weeks. For long term storage store at -20°C in small aliquots to prevent freeze-thaw cycles.

Precautions

GPR157 Antibody (Center) is for research use only and not for use in diagnostic or therapeutic procedures.

GPR157 Antibody (Center) - Protein Information

Name GPR157

Function Orphan receptor that promotes neuronal differentiation of radial glial progenitors

(RGPs). The activity of this receptor is mediated by a G(q)-protein that activates a phosphatidylinositol- calcium second messenger.

Cellular Location

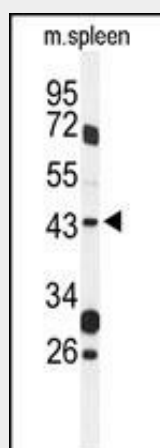
Cell projection, cilium membrane {ECO:0000250|UniProtKB:Q8C206}; Multi-pass membrane protein. Note=Expressed in the primary cilia of radial glial progenitors (RGPs) exposed to the cerebrospinal fluid {ECO:0000250|UniProtKB:Q8C206}

GPR157 Antibody (Center) - Protocols

Provided below are standard protocols that you may find useful for product applications.

- [Western Blot](#)
- [Blocking Peptides](#)
- [Dot Blot](#)
- [Immunohistochemistry](#)
- [Immunofluorescence](#)
- [Immunoprecipitation](#)
- [Flow Cytometry](#)
- [Cell Culture](#)

GPR157 Antibody (Center) - Images



Western blot analysis of GPR157 Antibody (Center) (Cat. #AP17753c) in mouse spleen tissue lysates (35ug/lane). GPR157 (arrow) was detected using the purified Pab.

GPR157 Antibody (Center) - Background

GPR157 is an orphan receptor.

GPR157 Antibody (Center) - References

Gregory, S.G., et al. Nature 441(7091):315-321(2006)